

# Functionaliteiten IFRS 16

Via het dashboard kunnen gebruikers door het model navigeren. Beschikbare dashboards zijn gebaseerd op de rol die is ingesteld voor een gebruiker.



Gebruikers kunnen contractdetails handmatig wijzigen, waarvan de financiële gevolgen automatisch opnieuw worden berekend in het hele model. Een geautomatiseerde upload is ook mogelijk.

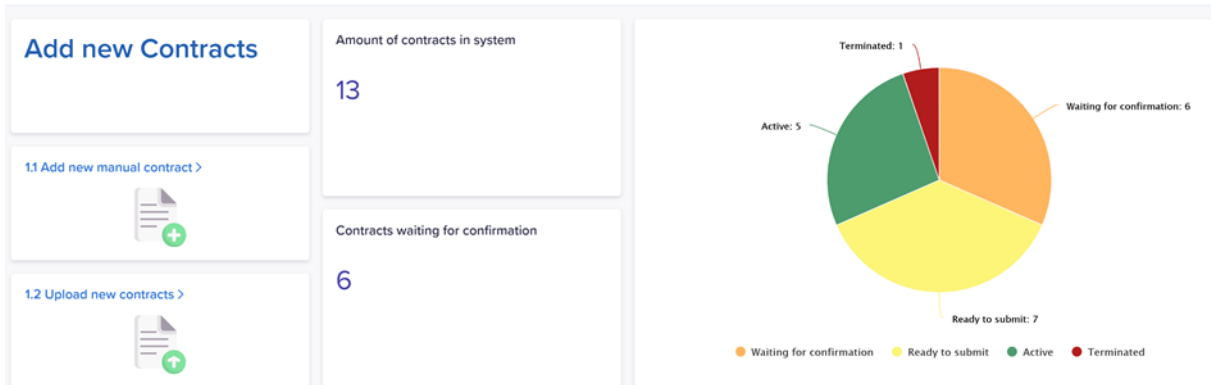
< 1.3 Contract Details < > ☆

Land Contract Test FY20 Actual Reset

Right-of-use Asset Settings		Depreciation Settings		Additional Info	
Lease Liability	942,468	Transfer Title Of Ownership		Entry	Test Germany
Payments On/Before Com...		Useful Life of the Asset (Months)		Lease Currency	EUR
Initial Direct Cost		Lease Term (Months)	132	Start Month	Jan 16
Estimated Cost Dismantlin...		Depreciation Term	132	End Month	Dec 26
Other				Lease Category	Land
Right-Of-Use Asset	942,468			Costcenter Input	CostCenter1
				Costcenter Final	CostCenter1
Contract Duration Settings		Contractual Bindings		Payment Settings	
Start Date	01-01-2016	Early Termination?		Lease component	1,000
Preferred Option for End Date:		Possible After		Override Lease component	
Standard End Date	31-12-2026	Penalties (LC)		Non-lease component	500
Prolongation Option		Currency	EUR	Override non-lease component	
Purchase Date		Open End Contract?	<input type="checkbox"/>	Payment Method	
Other		Expected Termination Date		Payment setting input	
Final End Date	31-12-2026	Termination Notice		Payment Setting	Monthly
				Custom Schedule?	
				Quarterly Payment Month	
				Half-Yearly Payment Month	
				Yearly Payment Month	
				Rent Free periods? (months)	
				Periodic Increase	
				Periodic Increase Month	
Discount Details		Change during contract			
Discount Rate %	0%	Activate Change			
Override Discount Rate %	0%	New End Date Option			
Category Discount	5%	Final End date			
		Use Custom Payment Sch...			
		Select Custom Payment Sc...			

De workflow houdt een overzicht van de status van alle contracten bij, inclusief de verantwoordelijke gebruiker.

< 01. Contract Management ↻ ⏪ ☆



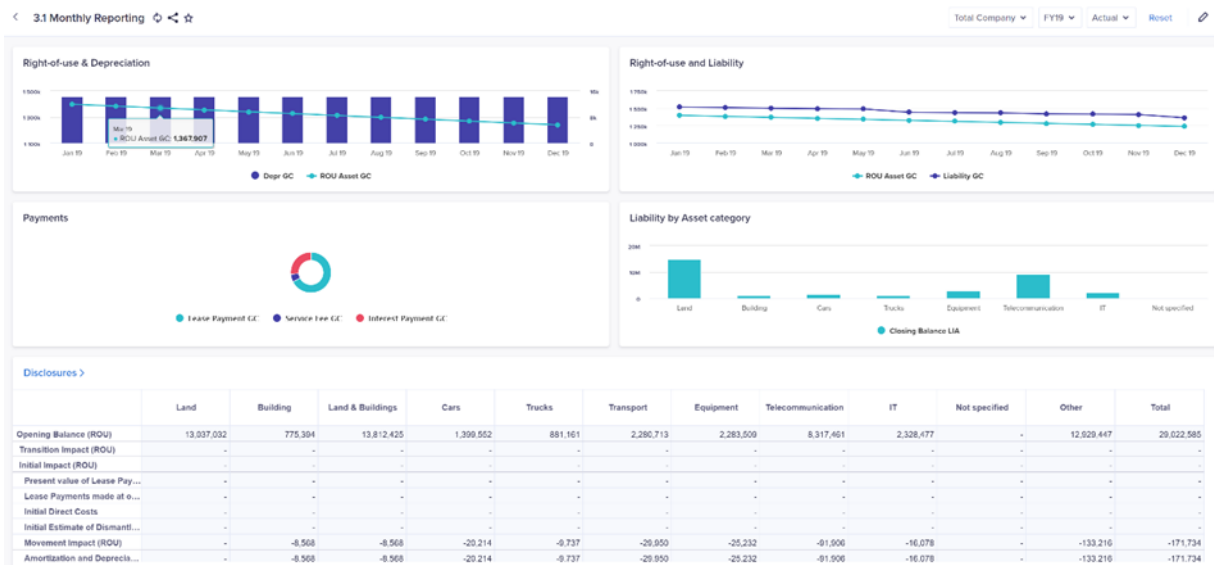
Alle financiële gegevens worden gepresenteerd in dynamische rapporten. Met invoervelden zoals de kolom 'Impairment' kunnen gebruikers handmatige aanpassingen maken aan leasecontracten.

< 02. Data Management ↻ ⏪ ☆

Standard Contract (Monthly) | FY20 | Actual | Reset | ⌵

Closing Balance Right-of... >	Depreciation >	Closing Balance Liability >	Lease Payment >	Service Fee >	Interest Costs >											
<b>51.41K</b>	<b>8.57K</b>	<b>60.61K</b>	<b>12K</b>	<b>2.4K</b>	<b>3.80K</b>											
Contract Calculation Yearly >																
	Asset Calc	Opening Balance (A)	Asset Correction	Impairment	Depreciation	Closing Balance (A)	Liability Calc	Opening Balance (L)	Opening Balance (L) Current	Opening Balance (L) Non Current	Liability Correction	Lease Payment	Service Fee	IBR	Interest Payment	Total Payments
FY16		94,247	-		8,568	85,679		94,247	3,522	90,724	-	9,000	2,400	6.0%	5,478	11,400
FY17		85,679	-		8,568	77,111		90,724	6,883	83,841	-	12,000	2,400	6.0%	5,117	14,400
FY18		77,111	-		8,568	68,543		83,841	7,296	76,545	-	12,000	2,400	6.0%	4,704	14,400
FY19		68,543	-		8,568	59,975		76,545	7,734	68,811	-	12,000	2,400	6.0%	4,266	14,400
FY20		59,975	-		8,568	51,407		68,811	8,198	60,614	-	12,000	2,400	6.0%	3,802	14,400
FY21		51,407	-		8,568	42,839		60,614	8,690	51,924	-	12,000	2,400	6.0%	3,310	14,400
FY22		42,839	-		8,568	34,272		51,924	9,211	42,713	-	12,000	2,400	6.0%	2,789	14,400

Het dashboard geeft inzicht in diverse kengetallen met betrekking tot leasebetalingen.



Verschillende grafieken laten zien welke invloed IFRS16 heeft op activa en passiva.

